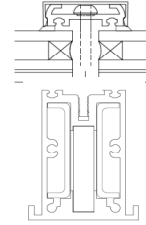


JEI Structural Engineering
 11108 N. Oak Trfy., Suite 208
 Kansas City, MO 64155

Voice: 816-734-8345
 Fax: 816-734-7013
www.jeistructural.com



Client: West Hampton Architectural Glass
 Project: Skylight
 Structure: Reinforced Purlin (1/2" bar & 1/8" channels)
 Part of: Span Summary
 Designer: S. Jeske

Date: 12/14/2011
 Project Number: JE11122

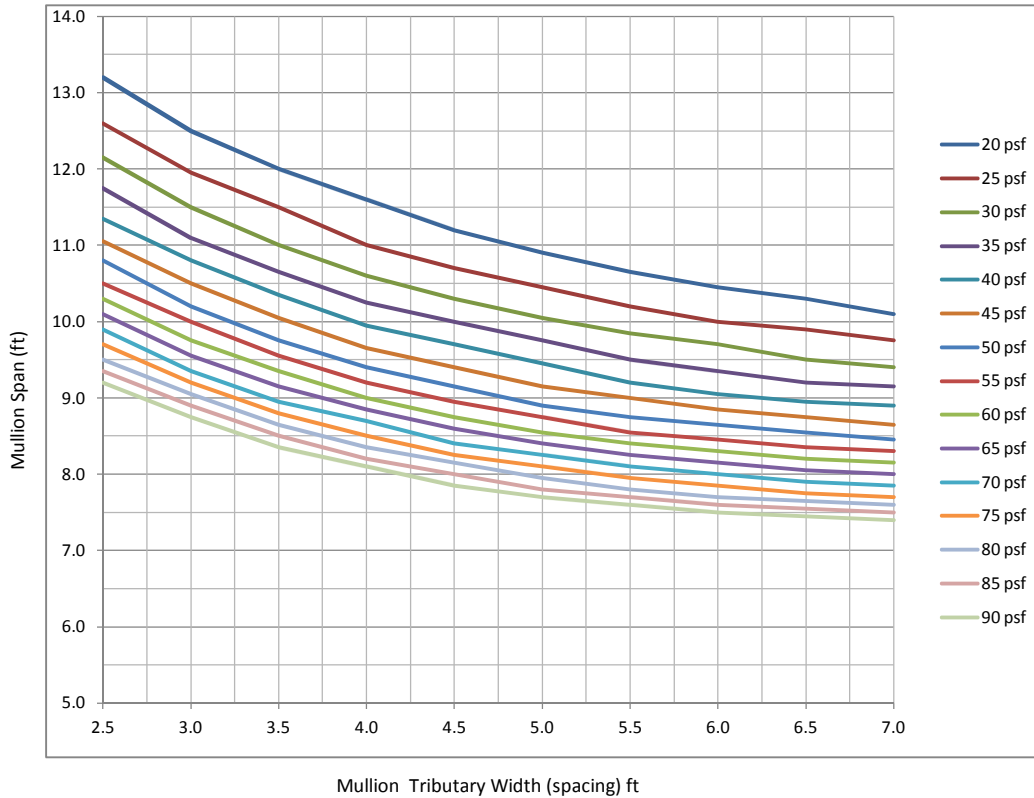
6063-T6

Glass Layup for Long Term Snow Loads

- 1/4" T - 1/2 AS - (1/4" A - .06 pvb - 1/4" A) Allowable to left of line
- 1/4" T - 1/2 AS - (3/16" A - .06 pvb - 3/16" A) Allowable to left of line
- (shaded) Glass Layup design should be checked for long term loads

Table Gives Allowable Span for the Mullion with perpendicular loads (ft)

perp. Load (psf)	Tributary Width (spacing) ft									
	2.5	3.0	3.5	4.0	4.5	5.0	5.5	6.0	6.5	7.0
20.0	13.20	12.50	12.00	11.60	11.20	10.90	10.65	10.45	10.30	10.10
25.0	12.60	11.95	11.50	11.00	10.70	10.45	10.20	10.00	9.90	9.75
30.0	12.15	11.50	11.00	10.60	10.30	10.05	9.85	9.70	9.50	9.40
35.0	11.75	11.10	10.65	10.25	10.00	9.75	9.50	9.35	9.20	9.15
40.0	11.35	10.80	10.35	9.95	9.70	9.45	9.20	9.05	8.95	8.90
45.0	11.05	10.50	10.05	9.65	9.40	9.15	9.00	8.85	8.75	8.65
50.0	10.80	10.20	9.75	9.40	9.15	8.90	8.75	8.65	8.55	8.45
55.0	10.50	10.00	9.55	9.20	8.95	8.75	8.55	8.45	8.35	8.30
60.0	10.30	9.75	9.35	9.00	8.75	8.55	8.40	8.30	8.20	8.15
65.0	10.10	9.55	9.15	8.85	8.60	8.40	8.25	8.15	8.05	8.00
70.0	9.90	9.35	8.95	8.70	8.40	8.25	8.10	8.00	7.90	7.85
75.0	9.70	9.20	8.80	8.50	8.25	8.10	7.95	7.85	7.75	7.70
80.0	9.50	9.05	8.65	8.35	8.15	7.95	7.80	7.70	7.65	7.60
85.0	9.35	8.90	8.50	8.20	8.00	7.80	7.70	7.60	7.55	7.50
90.0	9.20	8.75	8.35	8.10	7.85	7.70	7.60	7.50	7.45	7.40



Note: Design Chart includes weight of glazing & purlin (12psf max) and is for the superimposed load on the system. The Chart assumes reduced tributary areas base on geometric formulas for load distribution on a single pane of glass. The Chart does not include the design of the insulated glass units.