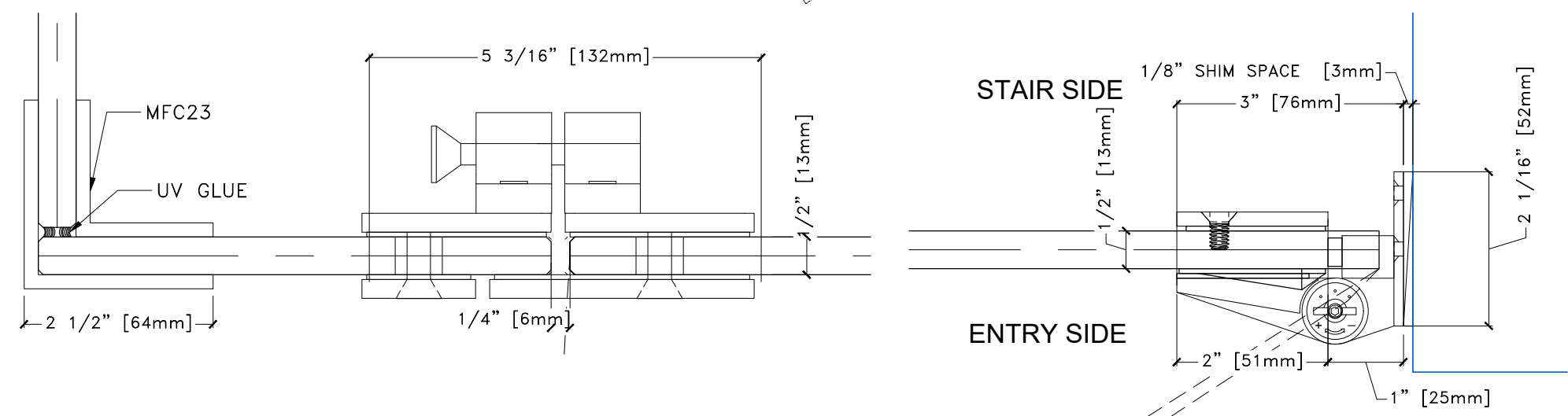
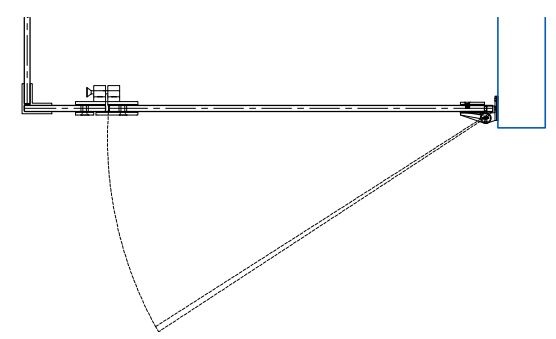


VIEWED FROM ENTRY SIDE



Typical Gate Detail

w.w.w.w.h.a.r.c.h.g.l.a.s.s.c.o.m

**Westhampton**

ARCHITECTURAL GLASS

631-325-1717

1368 Speonk Riverhead Rd. Speonk, NY 11972

DRAFTER: W.A.G.	SCALE: N.T.S.	DATE: 7.17.20
--------------------	------------------	------------------

DRAWING NUMBER:  
**C7.1**